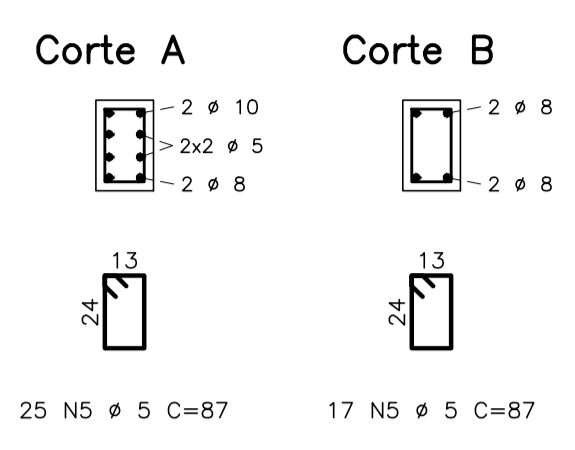
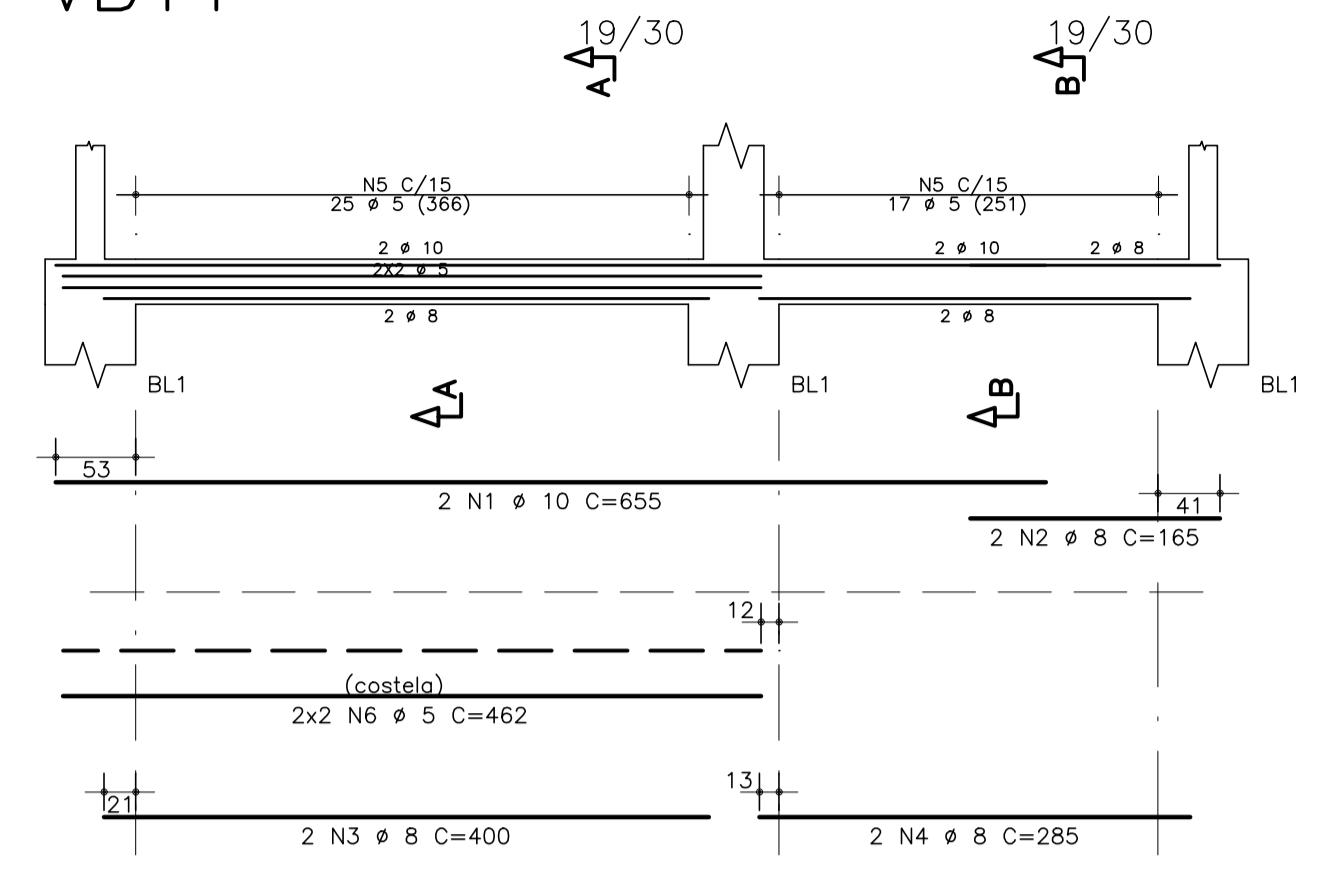
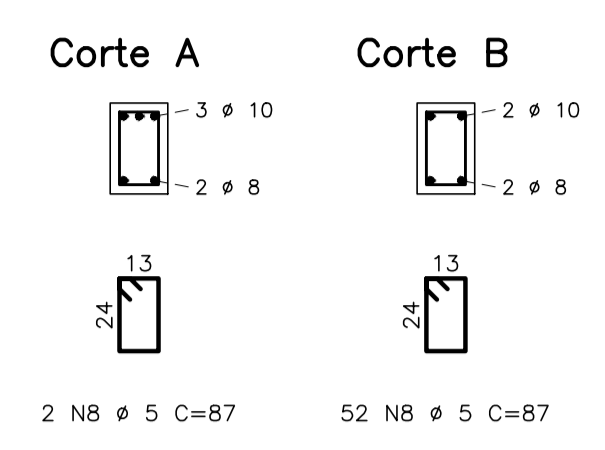
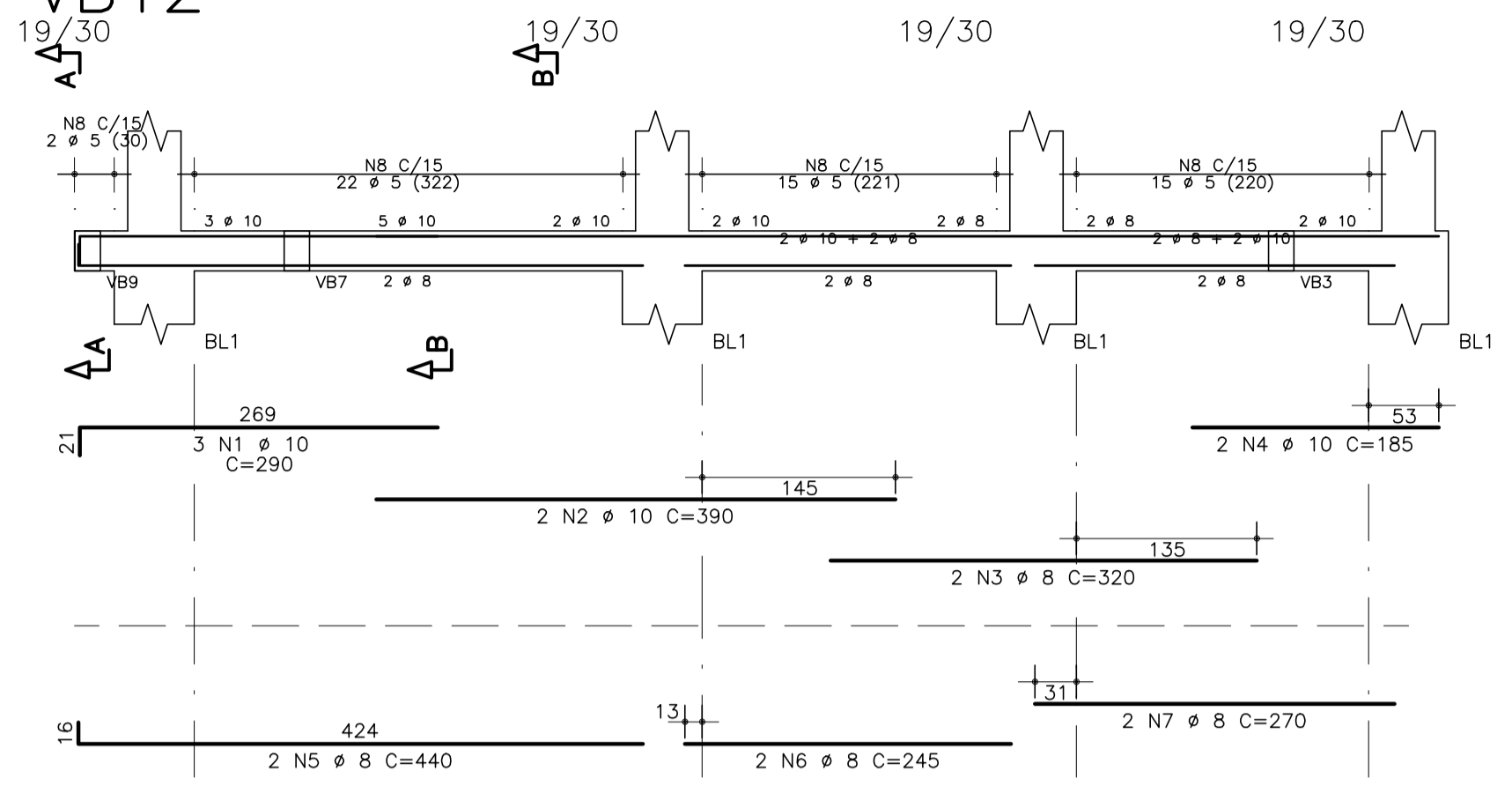


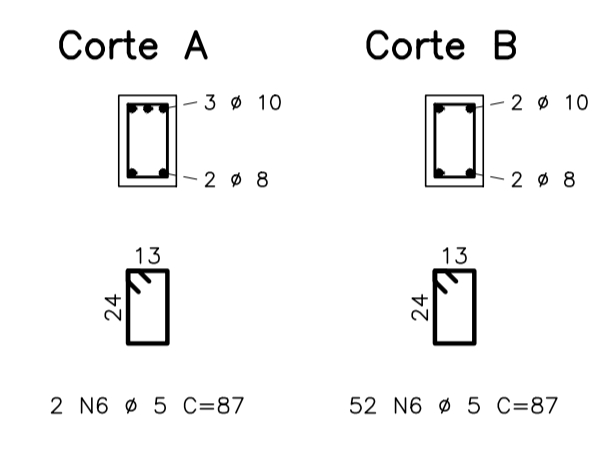
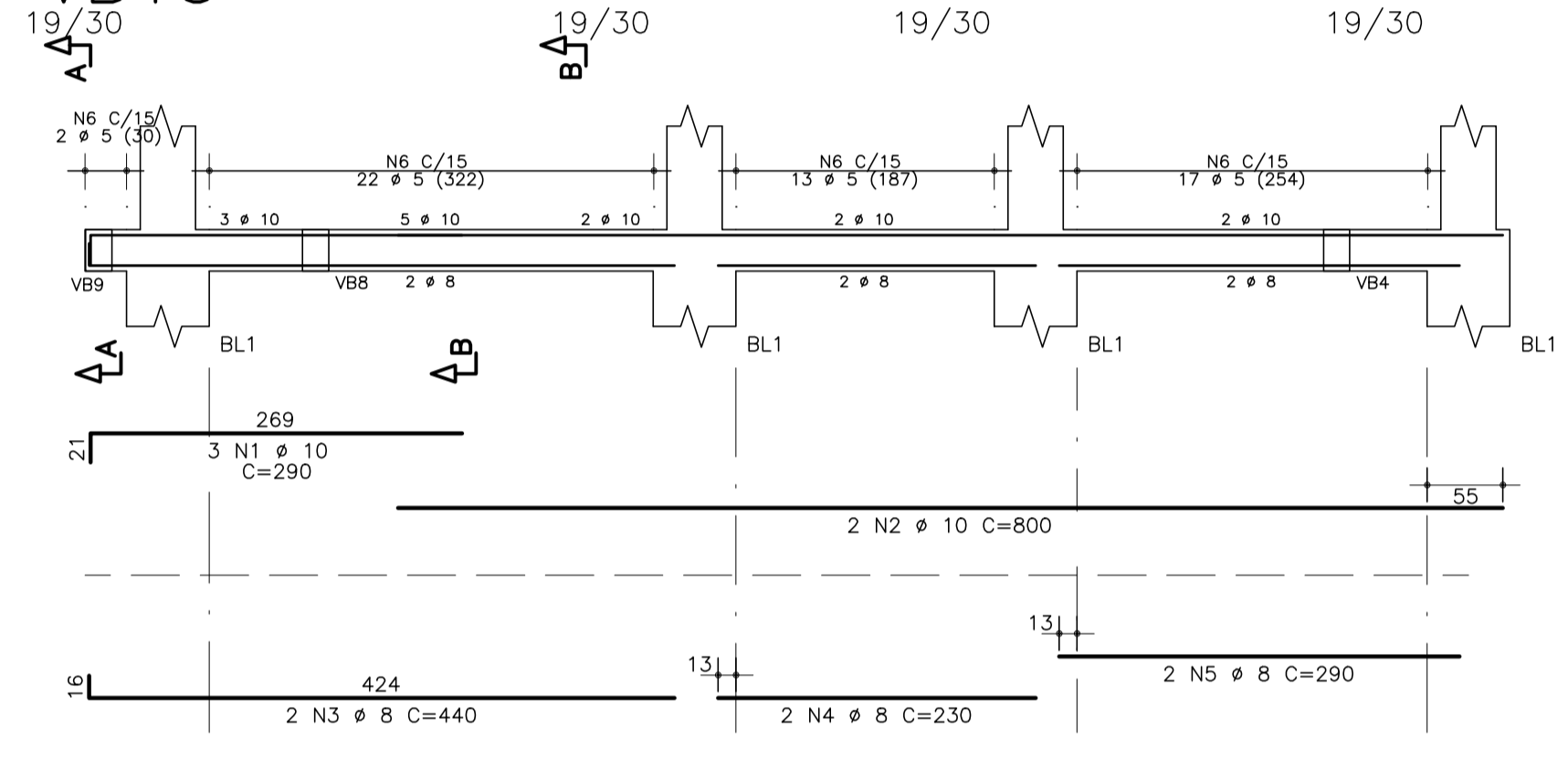
VB11



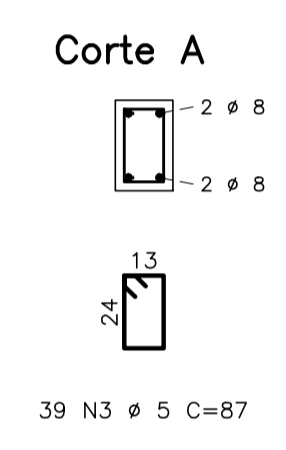
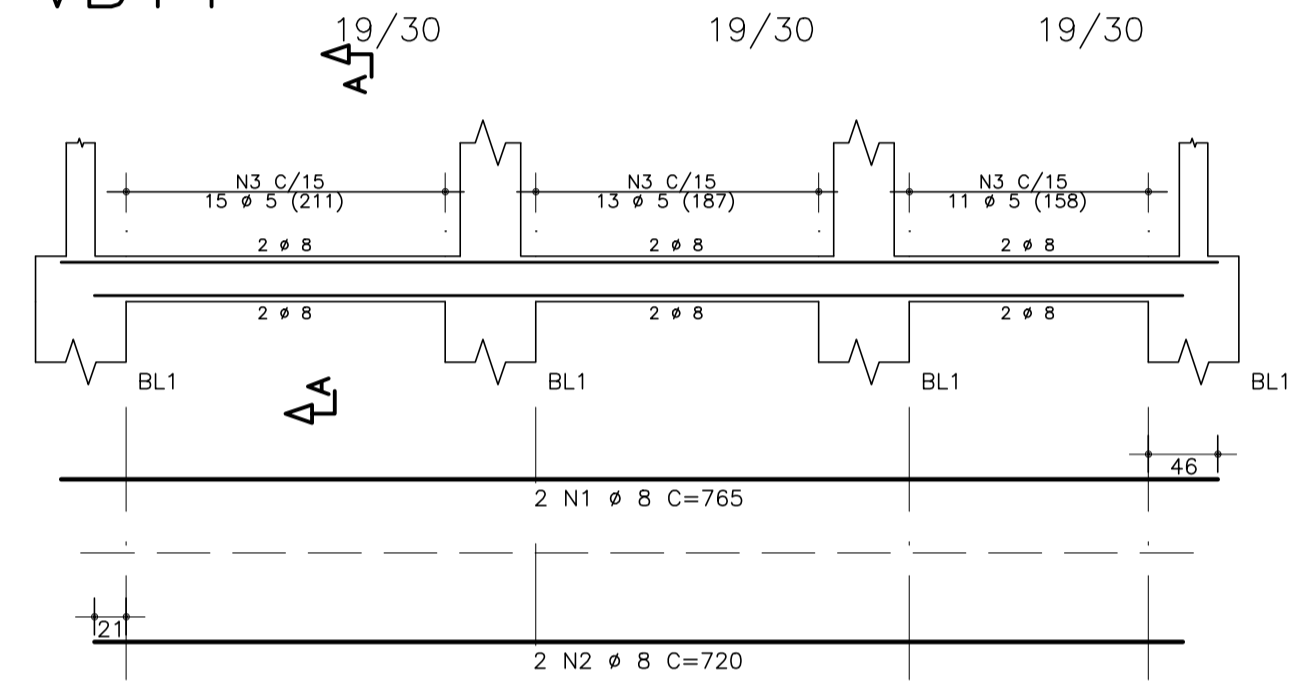
VB12



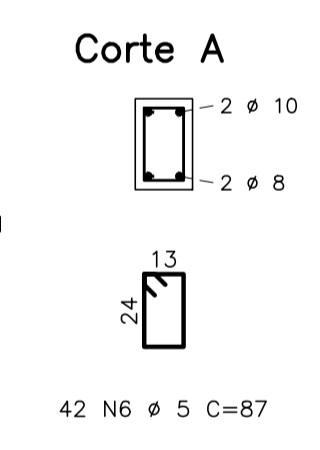
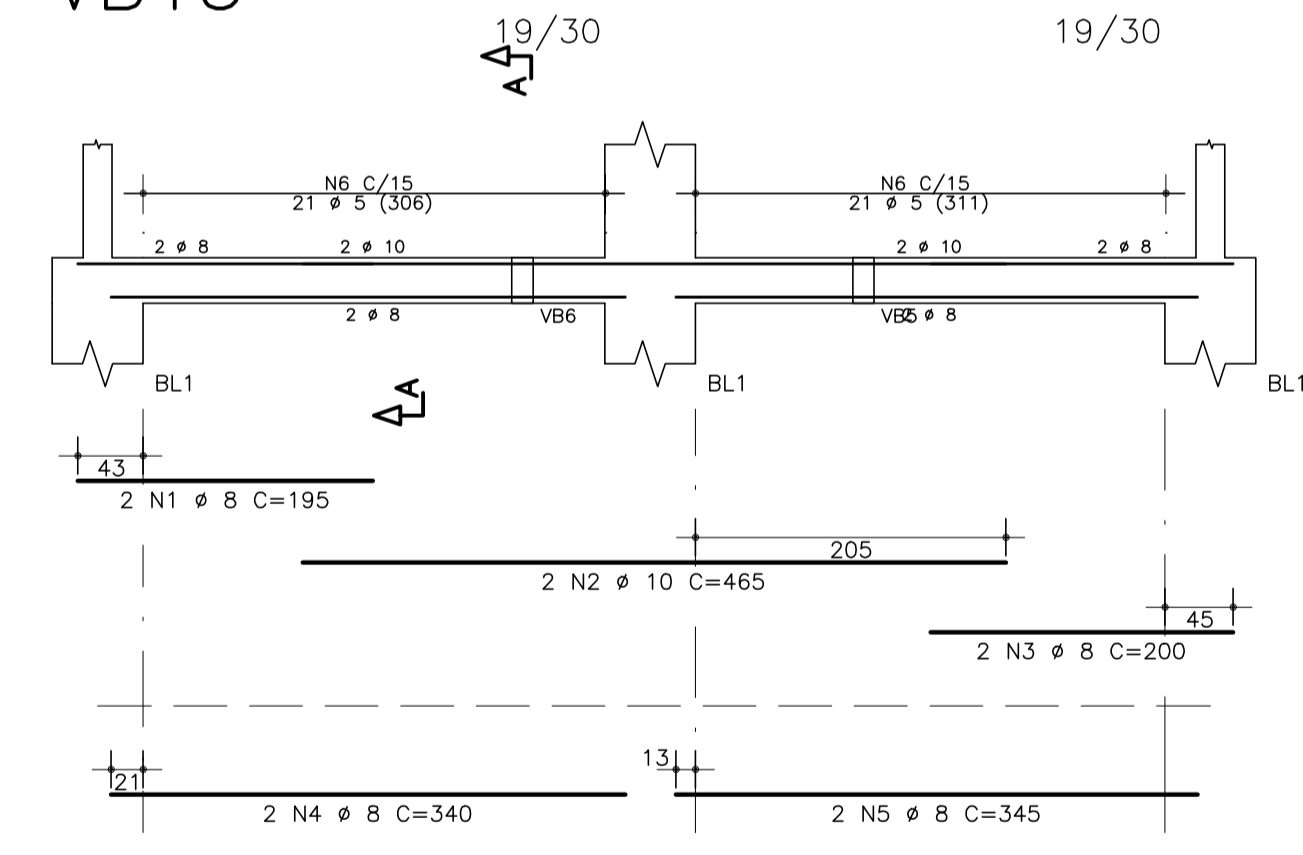
VB13



VB14



VB15



AÇO	POS	BIT (mm)	QUANT	COMPRIMENTO	
				UNIT (cm)	TOTAL (cm)
VB11					
CA-50	1	10	2	655	1310
CA-50	2	8	2	165	330
CA-50	3	8	2	400	800
CA-50	4	8	2	285	570
CA-60	5	5	42	87	3654
CA-60	6	5	4	462	1848
VB12					
CA-50	1	10	3	290	870
CA-50	2	10	2	390	780
CA-50	3	8	2	320	640
CA-50	4	10	2	185	370
CA-50	5	8	2	440	880
CA-50	6	8	2	245	490
CA-50	7	8	2	270	540
CA-60	8	5	54	87	4698
VB13					
CA-50	1	10	3	290	870
CA-50	2	10	2	800	1600
CA-50	3	8	2	440	880
CA-50	4	8	2	230	460
CA-50	5	8	2	290	580
CA-60	6	5	54	87	4698
VB14					
CA-50	1	8	2	765	1530
CA-50	2	8	2	720	1440
CA-60	3	5	39	87	3393
VB15					
CA-50	1	8	2	195	390
CA-50	2	10	2	465	930
CA-50	3	8	2	200	400
CA-50	4	8	2	340	680
CA-50	5	8	2	345	690
CA-60	6	5	42	87	3654
AÇO		BIT (mm)	COMPR (m)	PESO (kg)	
CA-60	5	219		34	
CA-50	8	113		45	
CA-50	10	67		42	
PESO TOTAL				CA 60 =	34
				CA 50 =	86

Revisões (discriminação)	Nº	Data	Rubrica